

GIT - wprowadzenie i zalety korzystania z systemu kontroli wersji

Łukasz Marchel



Kooperacyjne tworzenie i jego problemy:

- Utrzymanie aktualnej wersji u członków zespołu
- Zabezpieczenie projektu przed jego utratą
- Wdrożenie nowego członka do zespołu
- Uważanie na to, aby nie nadpisać/usunąć cudzych zmian
- Przechowywanie historycznych wersji projektu
- Utrzymywanie kilku wersji projektu (różne środowiska DEV, TEST, UAT, PROD)
- Co zrobić gdy dojdzie do konfliktu i jak go rozwiązać?

Możliwe rozwiązania

- Praca indywidualna
- Kopie robocze (finalFINAL_1_absoluteFINAL)
- Dysk sieciowy (Dropbox, OneDrive itp.)
- System kontroli wersji (GIT)

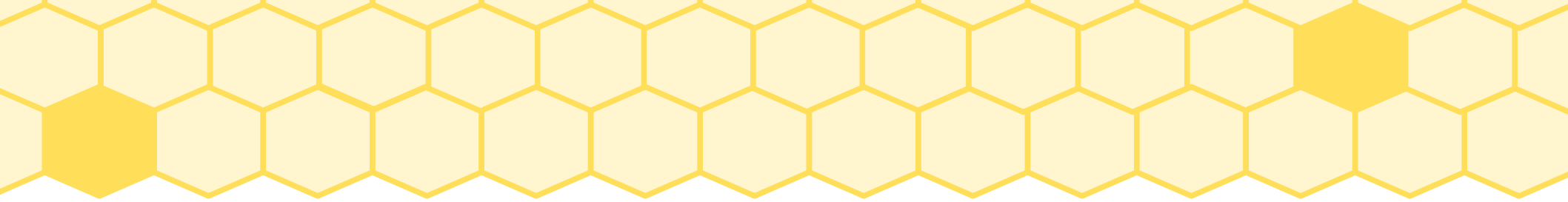
Dlaczego GIT jest git?

- Możliwość współpracy dowolnej liczby osób nad projektem
- Projekt przechowywany bezpiecznie na zdalnym serwerze
- Prostota wdrożenia nowych członków
- Lokalna kopia zdalnego repo u każdego członka
- Wersjonowanie zmian z możliwością ich wycofania
- Tworzenie gałęzi przechowujących równoległe wersje projektu
- Mechanizm rozwiązywania konfliktów

Dlaczego GIT jest git?

- Możliwość współpracy dowolnej liczby osób nad projektem
- Projekt przechowywany bezpiecznie na zdalnym serwerze
- Prostota wdrożenia nowych członków
- Lokalna kopia zdalnego repo u każdego członka
- Wersjonowanie zmian z możliwością ich wycofania
- Tworzenie gałęzi przechowujących równoległe wersje projektu
- Mechanizm rozwiązywania konfliktów





GIT w praktyce



Quick setup — if you've done this kind of thing before



Set up in Desktop

or

HTTPS

SSH

`https://github.com/Kostuch6/gitShowcase.git`



Get started by [creating a new file](#) or [uploading an existing file](#). We recommend every repository include a [README](#), [LICENSE](#), and [.gitignore](#).

...or create a new repository on the command line

```
echo "# gitShowcase" >> README.md
git init
git add README.md
git commit -m "first commit"
git branch -M main
git remote add origin https://github.com/Kostuch6/gitShowcase.git
git push -u origin main
```



...or push an existing repository from the command line

```
git remote add origin https://github.com/Kostuch6/gitShowcase.git
git branch -M main
git push -u origin main
```



...or import code from another repository

You can initialize this repository with code from a Subversion, Mercurial, or TFS project.

Import code

Tworzenie gałęzi lokalnie (sposób 1 - GIT)

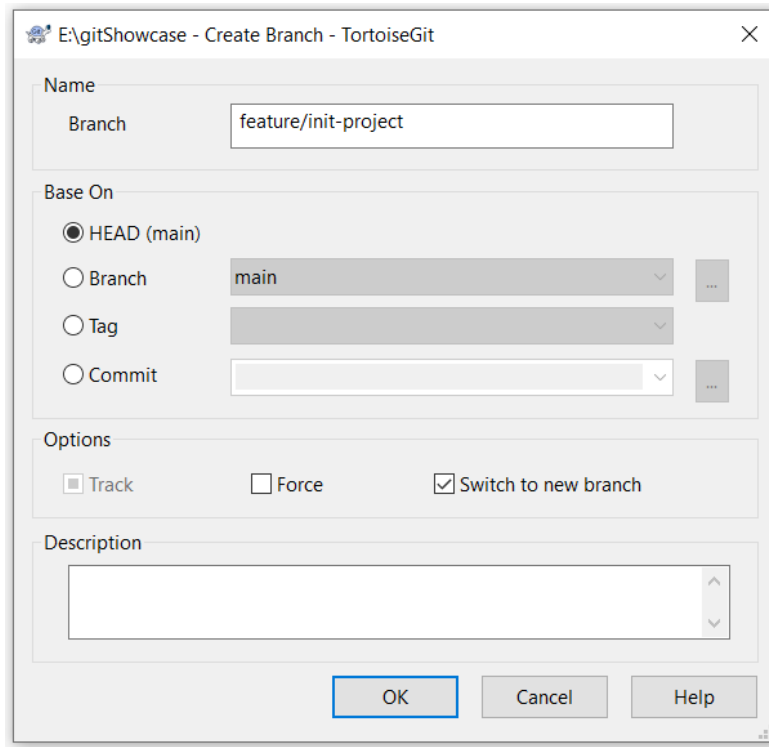
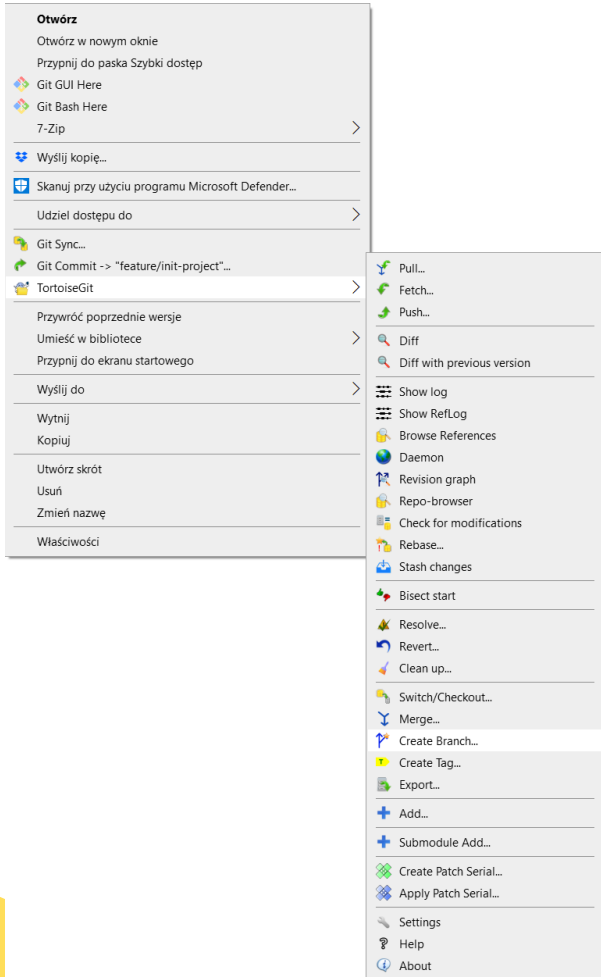
```
Tukas@DESKTOP-E4UFIRA MINGW64 /e/gitShowcase (main)
$ git branch feature/init-project

Tukas@DESKTOP-E4UFIRA MINGW64 /e/gitShowcase (main)
$ git checkout feature/init-project
Switched to branch 'feature/init-project'
```

LUB

```
Tukas@DESKTOP-E4UFIRA MINGW64 /e/gitShowcase (main)
$ git checkout -b feature/init-project
Switched to a new branch 'feature/init-project'
```

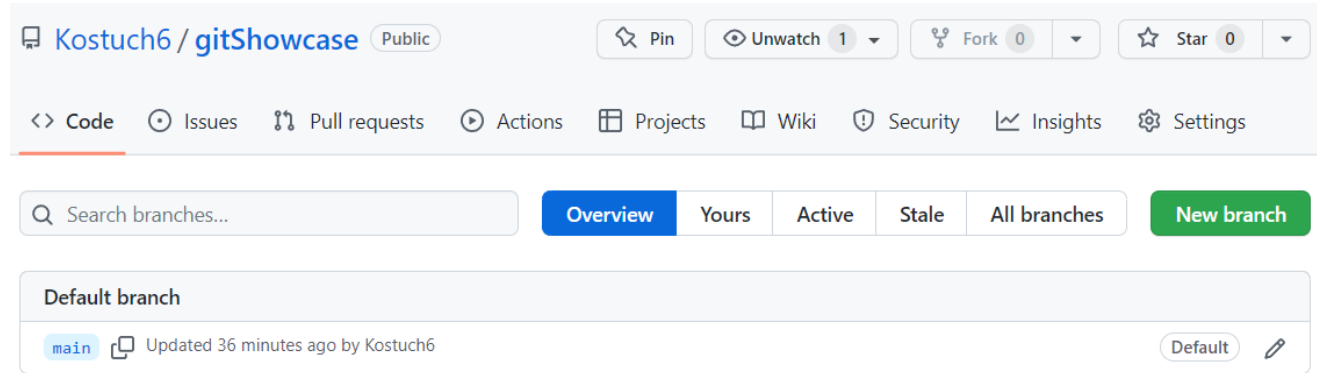

Tworzenie gałęzi lokalnie (sposób 2- TortoiseGit)



Wypchnięcie lokalnej gałęzi na zdalne repo

```
Tukas@DESKTOP-E4UFIRA MINGW64 /e/gitShowcase (feature/init-project)
$ git push -u origin HEAD
Total 0 (delta 0), reused 0 (delta 0), pack-reused 0
remote:
remote: Create a pull request for 'feature/init-project' on GitHub by visiting:
remote:   https://github.com/Kostuch6/gitShowcase/pull/new/feature/init-project
remote:
remote:
To https://github.com/Kostuch6/gitShowcase.git
 * [new branch]      HEAD -> feature/init-project
branch 'feature/init-project' set up to track 'origin/feature/init-project'.
```

Tworzenie gałęzi zdalnie (sposób 3 - GitHub)



Kostuch6 / gitShowcase Public

Pin Unwatch 1 Fork 0 Star 0

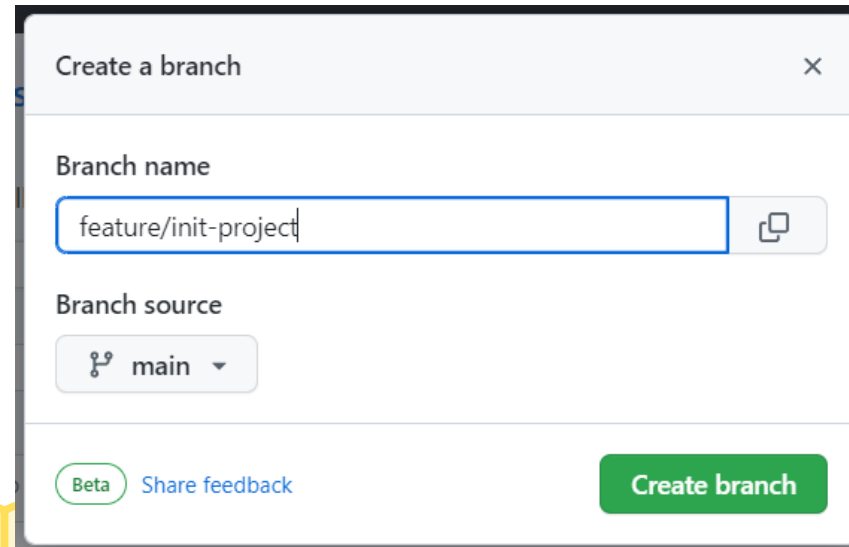
Code Issues Pull requests Actions Projects Wiki Security Insights Settings

Search branches...

Overview Yours Active Stale All branches New branch

Default branch

main Updated 36 minutes ago by Kostuch6 Default



Create a branch

Branch name

feature/init-project

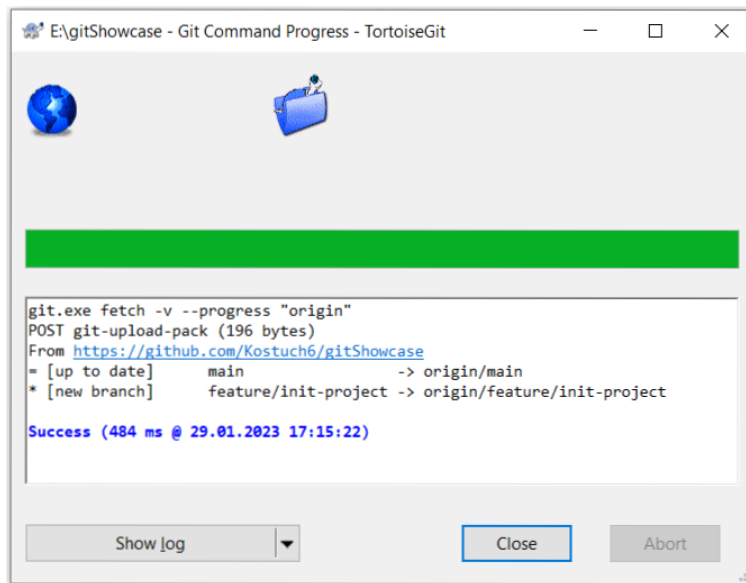
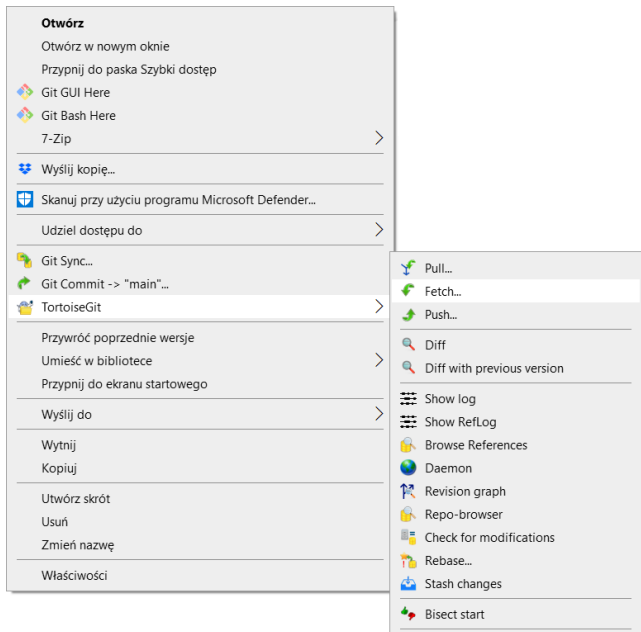
Branch source

main

Beta Share feedback

Create branch

Ściągnięcie zdalnej gałęzi



```
Lukas@DESKTOP-E4UFIRA MINGW64 /e/gitShowcase (main)
$ git fetch --all
From https://github.com/Kostuch6/gitShowcase
* [new branch] feature/init-project -> origin/feature/init-project
```

Tworzenie commita (GIT)

```
lukas@DESKTOP-E4UFIRA MINGW64 /e/gitShowcase (feature/init-project)
$ git commit
On branch feature/init-project
Your branch is up to date with 'origin/feature/init-project'.

Changes not staged for commit:
  (use "git add <file>..." to update what will be committed)
  (use "git restore <file>..." to discard changes in working directory)
        modified:   README.md

Untracked files:
  (use "git add <file>..." to include in what will be committed)
        .gitignore
        build.gradle
        gradle/
        gradlew
        gradlew.bat
        settings.gradle
        src/

no changes added to commit (use "git add" and/or "git commit -a")
```

```
*E:\gitShowcase\git\COMMIT_EDITMSG - Notepad++
File Edit Search View Encoding Language Settings Tools Macro Run Plugins Window ?
1 Initial commit with starting code
2
3 # Please enter the commit message for your changes. Lines starting
4 # with '#' will be ignored, and an empty message aborts the commit.
5 #
6 # On branch feature/init-project
7 # Your branch is up to date with 'origin/feature/init-project'.
8 #
9 # Changes to be committed:
10 #   modified:   README.md
11 #
12 # Untracked files:
13 #   .gitignore
14 #   build.gradle
15 #   gradle/
16 #   gradlew
17 #   gradlew.bat
18 #   settings.gradle
19 #   src/
20 #
21
```

```
lukas@DESKTOP-E4UFIRA MINGW64 /e/gitShowcase (feature/init-project)
$ git commit -a
warning: in the working copy of 'README.md', LF will be replaced by CRLF the next
time Git touches it
[feature/init-project 6c2e752] Initial commit with starting code
 1 file changed, 13 insertions(+), 1 deletion(-)
```

Tworzenie commita (TortoiseGit)

Commit to: feature/init-project new branch

Message:
Initial commit with starting code

Amend Last Commit 1/34
 Set author date
 Set author Kostuch6 <lukas.marchel@gmail.com> Add Signed-off-by

Changes made (double-click on file for diff):
Check: **All None Unversioned Versioned** Added Deleted **Modified Files** Submodules

Path	Extension	Status	Lines added	Lines removed
Modified Files				
<input checked="" type="checkbox"/> README.md	.md	Modified	14	1
Not Versioned Files				
<input type="checkbox"/> .gitignore	.gitignore	Unknown		
<input type="checkbox"/> build.gradle	.gradle	Unknown		
<input type="checkbox"/> gradle/wrapper/gradle-wrapper.jar	.jar	Unknown		
<input type="checkbox"/> gradle/wrapper/gradle-wrapper.properties	.properties	Unknown		
<input type="checkbox"/> gradlew		Unknown		
<input type="checkbox"/> gradlew.bat	.bat	Unknown		
<input type="checkbox"/> settings.gradle	.gradle	Unknown		
<input type="checkbox"/> src/main/java/com/example/gitshowcase/GitshowcaseApplication.java	.java	Unknown		
<input type="checkbox"/> src/main/resources/application.properties	.properties	Unknown		
<input type="checkbox"/> src/test/java/com/example/gitshowcase/GitshowcaseApplicationTests.java	.java	Unknown		

1 files selected, 11 files total

Staging support (EXPERIMENTAL)
 Show Unversioned Files
 Do not autoselect submodules

Show Whole Project
 Message only

Cgmmmit Cancel Help

Commit to: feature/init-project new branch

Message:
Initial commit with starting code

Amend Last Commit 1/34
 Set author date
 Set author Kostuch6 <lukas.marchel@gmail.com> Add Signed-off-by

Changes made (double-click on file for diff):
Check: **All None Unversioned Versioned** Added Deleted **Modified Files** Submodules

Path	Extension	Status	Lines added	Lines removed
<input checked="" type="checkbox"/> .gitignore	.gitignore	Added	37	0
<input checked="" type="checkbox"/> build.gradle	.gradle	Added	22	0
<input checked="" type="checkbox"/> gradle/wrapper/gradle-wrapper.jar	.jar	Added	-	-
<input checked="" type="checkbox"/> gradle/wrapper/gradle-wrapper.properties	.properties	Added	5	0
<input checked="" type="checkbox"/> gradlew		Added	240	0
<input checked="" type="checkbox"/> gradlew.bat	.bat	Added	91	0
<input checked="" type="checkbox"/> settings.gradle	.gradle	Added	1	0
<input checked="" type="checkbox"/> src/main/java/com/example/gitshowcase/GitshowcaseApplication.java	.java	Added	13	0
<input checked="" type="checkbox"/> src/main/resources/application.properties	.properties	Added	1	0
<input checked="" type="checkbox"/> src/test/java/com/example/gitshowcase/GitshowcaseApplicationTests.java	.java	Added	13	0
<input checked="" type="checkbox"/> README.md	.md	Modified	14	1

11 files selected, 11 files total

Staging support (EXPERIMENTAL)
 Show Unversioned Files
 Do not autoselect submodules

Show Whole Project
 Message only

Cgmmmit Cancel Help

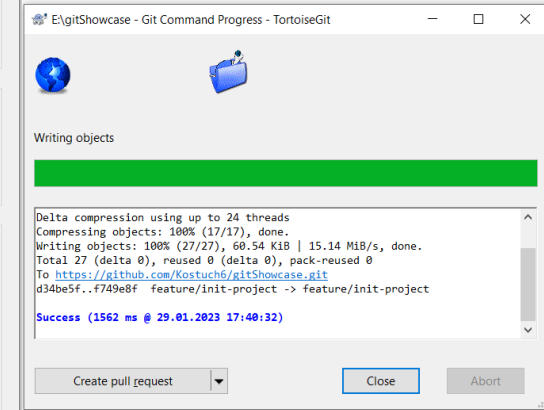
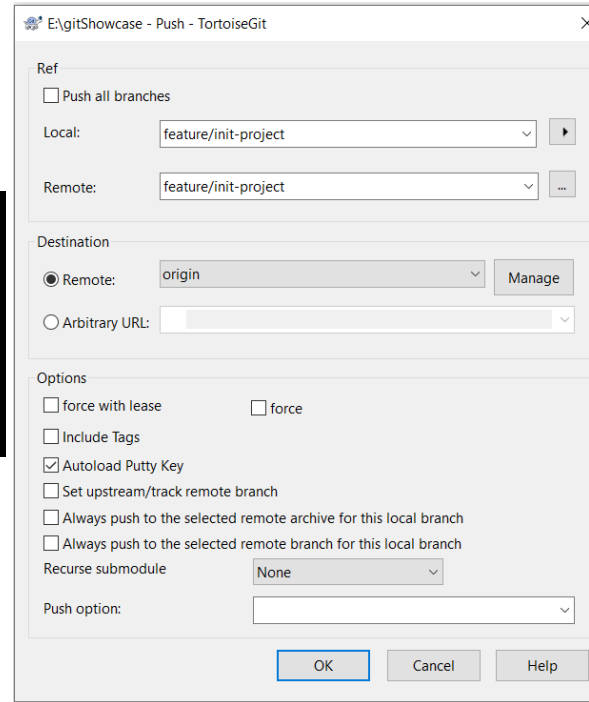
create mode 100644 settings.gradle
create mode 100644 src/main/java/com/example/gitshowcase/GitshowcaseApplication.java
create mode 100644 src/main/resources/application.properties
create mode 100644 src/test/java/com/example/gitshowcase/GitshowcaseApplicationTests.java

Success (110 ms @ 29.01.2023 17:37:56)

Push... Close Abort

Wypychanie zmian

```
Tukas@DESKTOP-E4UFIRA MINGW64 /e/gitShowcase (feature/init-project)
$ git push
Enumerating objects: 5, done.
Counting objects: 100% (5/5), done.
Delta compression using up to 24 threads
Compressing objects: 100% (2/2), done.
Writing objects: 100% (3/3), 573 bytes | 573.00 KiB/s, done.
Total 3 (delta 0), reused 0 (delta 0), pack-reused 0
To https://github.com/Kostuch6/gitShowcase.git
d34be5f..6c2e752 feature/init-project -> feature/init-project
```



Przygotowanie pull request'a (GitHub)

Kostuch6 / gitShowcase Public

<> Code Issues Pull requests Actions Projects Wiki Security Insights Settings

Search branches...

Overview Yours Active Stale All branches New branch

Default branch

main Updated 1 hour ago by Kostuch6 Default

Your main branch isn't protected
Protect this branch from force pushing or deletion, or require status checks before merging. [Learn more](#) Dismiss Protect this branch

Your branches

feature/init-project Updated 16 minutes ago by Kostuch6 0 | 1 New pull request

Open a pull request

Create a new pull request by comparing changes across two branches. If you need to, you can also [compare across forks](#).

base: main compare: feature/init-project ✓ Able to merge. These branches can be automatically merged.

Initial commit with starting code

Write Preview H B I `<> @`

Leave a comment

Attach files by dragging & dropping, selecting or pasting them.

Reviewers
No reviews

Assignees
No one—assign yourself

Labels
None yet

Projects
None yet

Milestone
No milestone

Create pull request

1 commit

11 files changed

1 contributor

Commits on Jan 29, 2023

Initial commit with starting code

Kostuch6 committed 18 minutes ago



f749e8f



Showing 11 changed files with 437 additions and 1 deletion.

Split

Unified

> 37 .gitignore

15 README.md

@@ -1 +1,14 @@

1 - # gitShowcase

1 + # gitShowcase Getting Started

2 +

3 + ### Reference Documentation

4 + For further reference, please consider the following sections:

5 +

6 + * [Official Gradle documentation](https://docs.gradle.org)

7 + * [Spring Boot Gradle Plugin Reference Guide](https://docs.spring.io/spring-boot/docs/3.0.2/gradle-plugin/reference/html/)

8 + * [Create an OCI image](https://docs.spring.io/spring-boot/docs/3.0.2/gradle-plugin/reference/html/#build-image)

9 +

10 + ### Additional Links

11 + These additional references should also help you:

12 +

13 + * [Gradle Build Scans - insights for your project's build](https://scans.gradle.com#gradle)

14 +

22 build.gradle

@@ -0,0 +1,22 @@

1 + plugins {

2 + id 'java'

3 + id 'org.springframework.boot' version '3.0.2'

4 + id 'io.spring.dependency-management' version '1.1.0'

5 + }

6 +

Akceptacja pull request'a

Initial commit with starting code #1

Edit <> Code

Open Kostuch6 wants to merge 1 commit into `main` from `feature/init-project`

Conversation 0 Commits 1 Checks 0 Files changed 11 +437 -1

Kostuch6 commented 1 minute ago Owner

No description provided.

Initial commit with starting code f749e8f

Add more commits by pushing to the `feature/init-project` branch on [Kostuch6/gitShowcase](#).

Require approval from specific reviewers before merging
Branch protection rules ensure specific people approve pull requests before they're merged. Add rule

Continuous integration has not been set up
GitHub Actions and several other apps can be used to automatically catch bugs and enforce style.

This branch has no conflicts with the base branch
Merging can be performed automatically.

Merge pull request You can also [open this in GitHub Desktop](#) or view [command line instructions](#).

Write Preview H B I ≡ <> 🔗 ☰ ☰ 🔍 @ 🗨️ ↶

Leave a comment

Attach files by dragging & dropping, selecting or pasting them. 📎

🛑 Close pull request Comment

Remember, contributions to this repository should follow our [GitHub Community Guidelines](#).

ProTip! Add comments to specific lines under [Files changed](#).

Reviewers ⚙️

No reviews

Still in progress? Convert to draft

Assignees ⚙️

No one—assign yourself

Labels ⚙️

None yet

Projects ⚙️

None yet

Milestone ⚙️

No milestone

Development ⚙️

Successfully merging this pull request may close these issues.

None yet

Notifications Customize

🔕 Unsubscribe

You're receiving notifications because you're watching this repository.

1 participant

🔒 Lock conversation

Initial commit with starting code #1

Edit <> Code

Open Kostuch6 wants to merge 1 commit into main from feature/init-project

Conversation 0 Commits 1 Checks 0 Files changed 11

+437 -1

Changes from all commits File filter Conversations

0 / 11 files viewed Review changes

Filter changed files

- .gitignore
- README.md
- build.gradle
- gradle/wrapper
 - gradle-wrapper.jar
 - gradle-wrapper.properties
- gradlew
- gradlew.bat
- settings.gradle
- src
 - main
 - java/com/example/gitshowcase
 - GitshowcaseApplication.java
 - resources
 - application.properties
 - test/java/com/example/gitshowcase
 - GitshowcaseApplicationTests...

```
37 .gitignore
... @@ -0,0 +1,37 @@
1 + HELP.md
2 + .gradle
3 + build/
4 + !gradle/wrapper/gradle-wrapper.jar
5 + !**/src/main/**/build/
6 + !**/src/test/**/build/
7 +
8 + ### STS ###
9 + .apt_generated
10 + .classpath
11 + .factorypath
12 + .project
13 + .settings
14 + .springBeans
15 + .sts4-cache
16 + bin/
17 + !**/src/main/**/bin/
18 + !**/src/test/**/bin/
19 +
20 + ### IntelliJ IDEA ###
21 + .idea
22 + *.iws
23 + *.iml
24 + *.ipr
25 + out/
26 + !**/src/main/**/out/
27 + !**/src/test/**/out/
```

Finish your review

Write Preview

H B I

Something is wrong, fix it

Attach files by dragging & dropping, selecting or pasting them.

- Comment**
Submit general feedback without explicit approval.
- Approve**
Submit feedback and approve merging these changes.
- Request changes**
Submit feedback that must be addressed before merging.

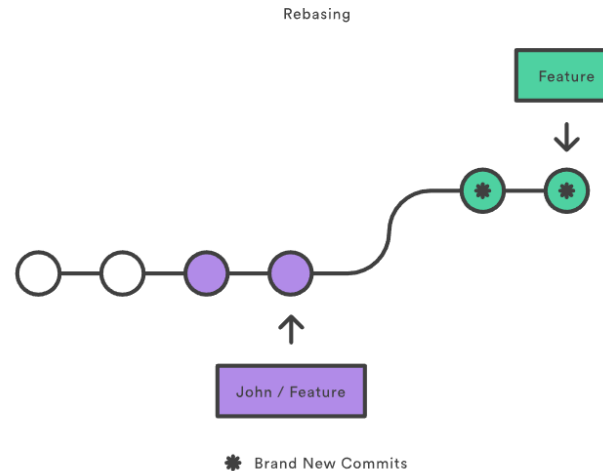
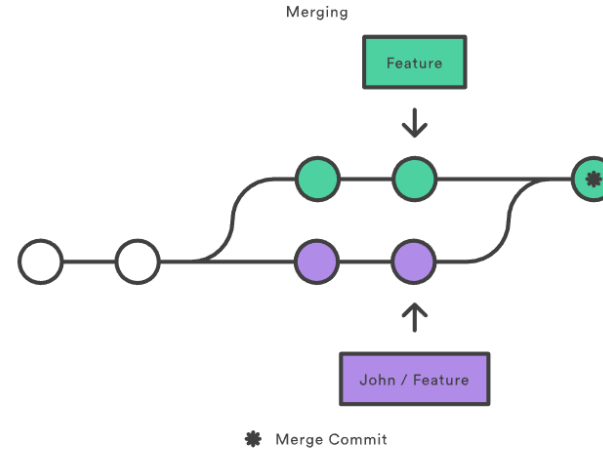
Submit review

Sposoby mergowania PR

Merging vs. rebasing onto a remote branch

Merge pull request You can also [open this in](#)

- ✓ **Create a merge commit**
All commits from this branch will be added to the base branch via a merge commit.
- Squash and merge**
The 1 commit from this branch will be added to the base branch.
- Rebase and merge**
The 1 commit from this branch will be rebased and added to the base branch.



Pull'owanie zdalnych zmian

```
Lukas@DESKTOP-E4UFIRA MINGW64 /e/gitShowcase (main)
$ git pull
Updating d34be5f..12c9748
Fast-forward
 .gitignore | 37 ++++
 README.md | 15 +-
 build.gradle | 22 ++
 gradle/wrapper/gradle-wrapper.jar | Bin 0 -> 60756 bytes
 gradle/wrapper/gradle-wrapper.properties | 5 +
 gradlew | 240 ++++++
 gradlew.bat | 91 ++++++
 settings.gradle | 1 +
 ../gitshowcase/GitshowcaseApplication.java | 14 ++
 src/main/resources/application.properties | 1 +
 ../gitshowcase/GitshowcaseApplicationTests.java | 13 ++
11 files changed, 438 insertions(+), 1 deletion(-)
create mode 100644 .gitignore
create mode 100644 build.gradle
create mode 100644 gradle/wrapper/gradle-wrapper.jar
create mode 100644 gradle/wrapper/gradle-wrapper.properties
create mode 100644 gradlew
create mode 100644 gradlew.bat
create mode 100644 settings.gradle
create mode 100644 src/main/java/com/example/gitshowcase/GitshowcaseApplication.j
ava
create mode 100644 src/main/resources/application.properties
create mode 100644 src/test/java/com/example/gitshowcase/GitshowcaseApplicationTe
sts.java
```

Rozwiązywanie konfliktów

Added message to greet the world #2

Edit <> Code

Kostuch6 wants to merge 1 commit into `main` from `feature/hello`

Conversation 0 Commits 1 Checks 0 Files changed 1 +1 -0

Kostuch6 commented now Owner

No description provided.

Added message to greet the world 4c5080d

Reviewers
No reviews
Still in progress? Convert to draft

Assignees
No one—assign yourself

Labels
None yet

Projects
None yet

Milestone
No milestone

Development
Successfully merging this pull request may close these issues.

None yet

Notifications Customize

Unsubscribe

You're receiving notifications because you're watching this repository.

1 participant

Add more commits by pushing to the `feature/hello` branch on `Kostuch6/gitShowcase`.

This branch has conflicts that must be resolved Resolve conflicts

Use the [web editor](#) or the [command line](#) to resolve conflicts.

Conflicting files

`src/main/java/com/example/gitshowcase/GitshowcaseApplication.java`

Merge pull request You can also [open this in GitHub Desktop](#) or view [command line instructions](#).

Write Preview H B I

Leave a comment

Attach files by dragging & dropping, selecting or pasting them.

Close pull request Comment

Remember, contributions to this repository should follow our [GitHub Community Guidelines](#).

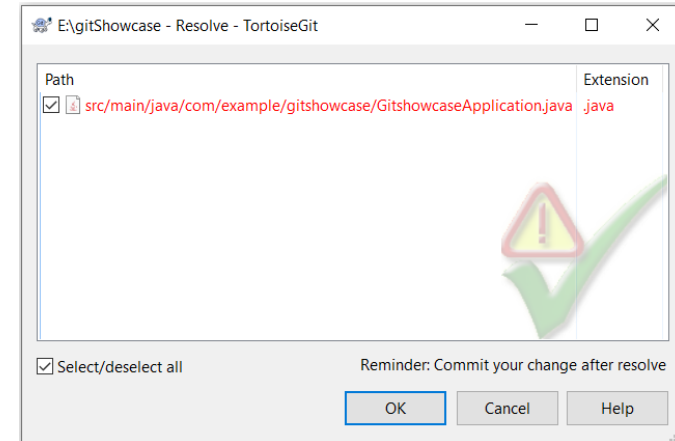
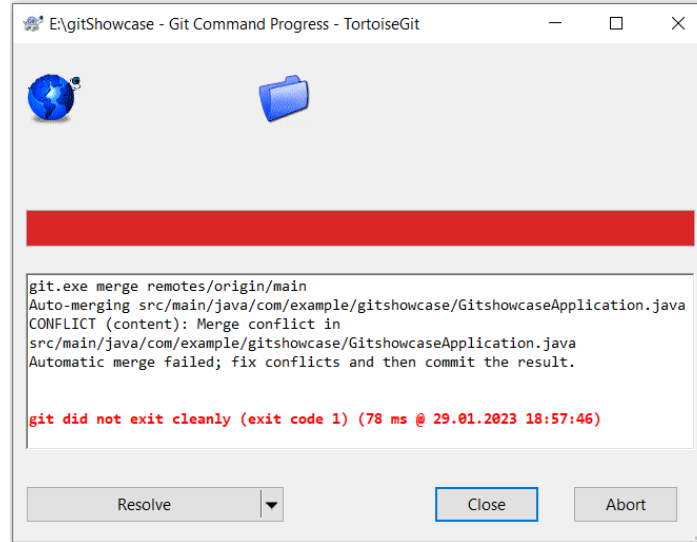
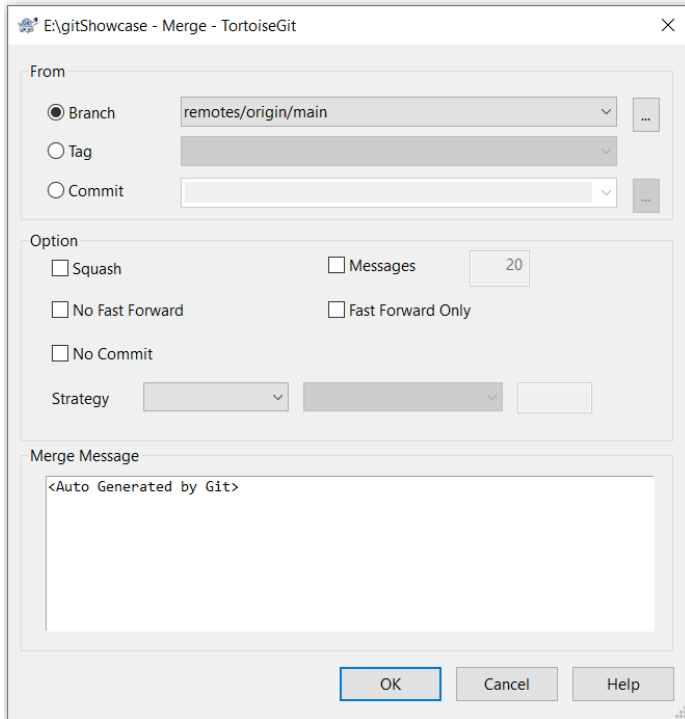
Rozwiązywanie konfliktów (GIT)

```
lukas@DESKTOP-E4UFIRA MINGW64 /e/gitShowcase (feature/hello)
$ git pull origin main
From https://github.com/Kostuch6/gitShowcase
* branch      main      -> FETCH_HEAD
Auto-merging src/main/java/com/example/gitshowcase/GitshowcaseApplication.java
CONFLICT (content): Merge conflict in src/main/java/com/example/gitshowcase/GitshowcaseApplication.java
Automatic merge failed; fix conflicts and then commit the result.
```

```
1 package com.example.gitshowcase;
2
3 import org.springframework.boot.SpringApplication;
4 import org.springframework.boot.autoconfigure.SpringBootApplication;
5
6 @SpringBootApplication
7 public class GitshowcaseApplication {
8
9     public static void main(String[] args) {
10         <<<<<< HEAD
11             System.out.println("HELLO WORLD!");
12         =====
13             System.out.println("Hello World!");
14         >>>>>> 10c0764e0c0b5195da9964f29bd975cf1eb79d6d
15             SpringApplication.run(GitshowcaseApplication.class, args);
16         }
17     }
18 }
```

```
1 package com.example.gitshowcase;
2
3 import org.springframework.boot.SpringApplication;
4 import org.springframework.boot.autoconfigure.SpringBootApplication;
5
6 @SpringBootApplication
7 public class GitshowcaseApplication {
8
9     public static void main(String[] args) {
10         System.out.println("Hello World!");
11         SpringApplication.run(GitshowcaseApplication.class, args);
12     }
13 }
14 }
```

Rozwiązywanie konfliktów (TortoiseGit)



Plik Edit



Save



Reload



Undo



Redo

Enable Edit



Copy



Paste



Find Previous



Find Next



Goto Line



Mark as resolved



Previous difference



Next difference



Previous conflict



Next conflict



Previous inline difference



Next inline difference



Use left block



Use left text block



Show Whitespaces



Compare whitespaces



Ignore whitespace changes



Ignore all whitespace changes



Inline diff



Inline diff word-wise



Regex Filter



Ignore Comments



View Bars



Wrap Lines



View

Edit

Navigate

Blocks

Whitespaces

Diff

View

MERGE_HEAD (origin/main, 10c0764e)

```
1 package·com·example·gitshowcase;↵
2 ↵
3 import·org·springframework·boot·SpringApplication;↵
4 import·org·springframework·boot·autoconfigure·SpringBootApplication;↵
5 ↵
6 @SpringBootApplication↵
7 public·class·GitshowcaseApplication·{↵
8 ↵
9   → public·static·void·main(String[]·args)·{↵
10  → → System.out.println("Hello World!");↵
11  → → SpringApplication.run(GitshowcaseApplication.class,·args);↵
12  → }↵
13 ↵
14 }↵
```

HEAD

```
1 package·com·example·gitshowcase;↵
2 ↵
3 import·org·springframework·boot·SpringApplication;↵
4 import·org·springframework·boot·autoconfigure·SpringBootApplication;↵
5 ↵
6 @SpringBootApplication↵
7 public·class·GitshowcaseApplication·{↵
8 ↵
9   → public·static·void·main(String[]·args)·{↵
10  → → System.out.println("HELLO·WORLD!");↵
11  → → SpringApplication.run(GitshowcaseApplication.class,·args);↵
12  → }↵
13 ↵
14 }↵
```

* Merged - GitshowcaseApplication.java

```
1 package·com·example·gitshowcase;↵
2 ↵
3 import·org·springframework·boot·SpringApplication;↵
4 import·org·springframework·boot·autoconfigure·SpringBootApplication;↵
5 ↵
6 @SpringBootApplication↵
7 public·class·GitshowcaseApplication·{↵
8 ↵
9   → public·static·void·main(String[]·args)·{↵
10  → → System.out.println("Hello World!");↵
11  → → SpringApplication.run(GitshowcaseApplication.class,·args);↵
12  → }↵
13 ↵
14 }↵
```

Commit to: feature/hello

 new branch

Message:

```
Merge remote-tracking branch 'remotes/origin/main' into feature/hello
# Conflicts:
#   src/main/java/com/example/gitshowcase/GitshowcaseApplication.java
```

1/1

 Amend Last Commit Set author date Set author


Add Signed-off-by

Changes made (double-click on file for diff):

Check: **All None** Unversioned **Versioned** Added Deleted **Modified Files** Submodules

Path	Extension	Status	Lines added	Lines removed
<input checked="" type="checkbox"/> src/main/java/com/example/gitshowcase/GitshowcaseApplication.java	java	Modified	1	1

TortoiseGit


 The commit you are composing is a special commit. It is a merge commit and, thus contains your changes as well as the changes of a merged branch.

You should NOT uncheck files unless you know what you are doing.

When you merge changes, conflicts can arise that must be solved manually (i.e., you need to integrate your changes into a file which was also modified on another branch).

See help for more information.

Don't show this message again OK



1 files selected, 1 files total

[View Patch>>](#) Staging support (EXPERIMENTAL) Show Unversioned Files Do not autoselect submodules Show Whole Project Message only

Commit

Cancel

Help

Added message to greet the world #3

Edit <> Code

Open Kostuch6 wants to merge 2 commits into main from feature/hello

Conversation 0 Commits 2 Checks 0 Files changed 0 +0 -0

Kostuch6 commented 50 minutes ago Owner

No description provided.

Kostuch6 added 2 commits 50 minutes ago

- Added message to greet the world 384c067
- Merge remote-tracking branch 'remotes/origin/main' into feature/hello 009a164

Reviewers
No reviews
Still in progress? Convert to draft

Assignees
No one—assign yourself

Labels
None yet

Projects
None yet

Milestone
No milestone

Development
Successfully merging this pull request may close these issues.
None yet

Notifications Customize

You're receiving notifications because you're watching this repository.

Add more commits by pushing to the **feature/hello** branch on **Kostuch6/gitShowcase**.

Require approval from specific reviewers before merging Add rule

Branch protection rules ensure specific people approve pull requests before they're merged.

Continuous integration has not been set up

GitHub Actions and several other apps can be used to automatically catch bugs and enforce style.

This branch has no conflicts with the base branch

Merging can be performed automatically.

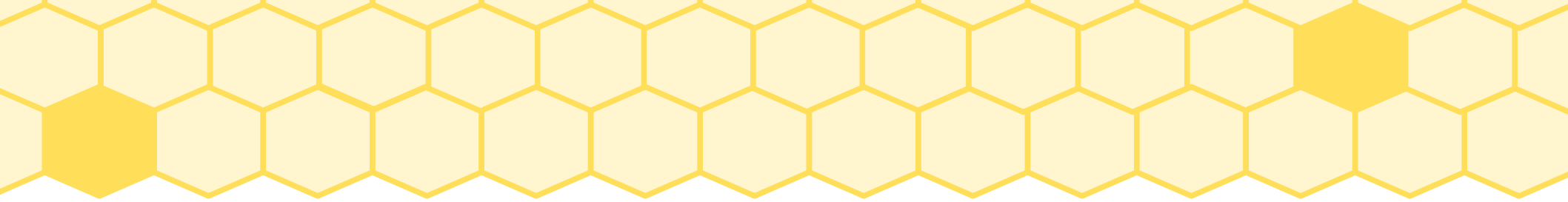
You can also [open this in GitHub Desktop](#) or view [command line instructions](#).

Write Preview

H B I

Jak dowiedzieć się więcej?

- <https://git-scm.com/>
- <https://tortoisegit.org/>
- <https://www.atlassian.com/git/tutorials/learn-git-with-bitbucket-cloud>
- <https://www.udemy.com/course/kurs-git-i-github-od-podstaw/>



PYTANIA





DZIĘKUJĘ ZA UWAGĘ